



**Environmental Report Card**

✓ Non-carcinogenic

# CRETE-LEASE® 880-Xtra Release Agent Specification Sheet

## 1. PRODUCT NAME

Crete-Lease 880-Xtra Release Agent

## 2. MANUFACTURER

Cresset Chemical Co., Inc.  
One Cresset Center  
Weston, Ohio 43569

**800-367-2020** USA & Canada  
419-669-2041

(FAX) 419-669-2200

www.cresset.com

cresset@cresset.com

## 3. PRODUCT DESCRIPTION

**Basic Use:** Crete-Lease 880-Xtra releases any kind of form or formliner (except expanded polystyrene) from hardened concrete. Forms and formliners strip easily and cleanly. Crete-Lease 880-Xtra also helps eliminate bugholes and stains.

Use Crete-Lease 880-Xtra on pallets and equipment that contact concrete. It also provides rust protection for steel forms and equipment. It:

- Helps produce CCS 1 or CCS 2
- Is the lowest viscosity release agent available
- Eliminates bugholes—even with superplasticized concrete
- Promotes easy stripping, especially when applied in an ultra thin film
- Promotes easy cleanup of forms
- Is non-staining
- Will not transfer to the concrete surface—adhesion of caulks, paints or coatings is not affected
- Does not effloresce
- Can be applied in sub-freezing or very hot temperatures
- Does not “kill” concrete surfaces
- Helps minimize cleanup of equipment, including concrete buckets and mixers

**Limitations:** a. Although subfreezing temperatures have no effect on the releasing action of Crete-Lease 880-Xtra, temperatures below freezing promote thicker film thicknesses which causes more bugholes.

b. Some black rubber forms will degrade rapidly when used with Crete-Lease 880-Xtra.

### TABLE OF PROPERTIES

Color	Straw
Opacity	Clear
Freeze Damage	None
Flash Point	210°F (80°C)
Viscosity (centipoises)	6 @ 68°F (20°C)
Solids	None
Pounds per gallon	7.0
VOC	440 g/L

**Composition:** A proprietary blend of neutralized vegetable oils in mineral spirits. Contains no waxes, no silicones...no carcinogens.

c. On B-B plywood be sure plywood surfaces are saturated, especially on first use.

d. Overspray on adjacent hard surface materials is not harmful if removed within 24 hours. Remove overspray with a common degreaser.

e. Do not use Crete-Lease 880-Xtra on expanded polystyrene (foam) form liners.

**Ground Shipping in the USA:** Containers holding 55 gallons or 5 gallons or less (regardless of the number of containers) are not federally regulated and shipping product in the Cresset package does not require following hazardous shipping requirements. A container holding 275 gallons or a bulk shipment requires federally mandated procedures on the driver, container and shipping papers. See Cresset brochure “Ground Shipping” for details.

**Applicable Standards:** “Cresset Concrete Standards”, a photographic appearance guide. Corps of Engineers, “Civil Works Construction Guide Specifications,” CW-03101, Section 5.3 and Section 8. Corps of Engineers, “Guide Specification Military Construction,” CEGS-03300, Section 10.8.

## 4. TECHNICAL DATA

Please see Tables.

## 5. APPLICATION

**Preparatory Work:** Form surfaces must be extremely clean to produce ar-

chitectural surfaces CCS 1, CCS 2 and CCS 3. Even very small amounts of buildup, dust or debris show on the final surface. Use only non-porous form and formliner surfaces to achieve CCS 1, CCS 2 and CCS 3 concrete surfaces.

Apply Crete-Lease 880-Xtra about 20 minutes before placing concrete, or up to 14 days before if treated surfaces are protected from dust and debris.

**Dilution:** Use as is...any dilution with fuel oil, diesel fuels, or mineral spirits promotes an increase in stripping difficulties, concrete build-up, bugholes, soft spots, and staining.

**CCS 1 Application Guidelines:** Non-porous form surfaces are critical to achieve CCS 1.

- a. Wipe on an ultra thin film of Crete-Lease 880-Xtra with a clean, soft flannel cloth that is moist, not wet, with release agent. Wipe out “brush strokes”.
- b. Spray textured form or formliners then “wipe off” with a clean, soft flannel cloth that is moist, not wet, with Crete-Lease 880-Xtra.

Properly executed, either procedure produces an ultra thin film of Crete-Lease 880-Xtra less than 0.0005 inch...about 1/3 as thick as a human hair. This ultra thin film helps produce bughole-free concrete surfaces without stains and without problems of adhesion of caulk or other coatings. Forms strip cleanly and easily.

### TABLE OF FORM AND FORMLINER COMPATIBILITY

Plywood	All Grades, Pre-oiled, Overlaid (LDO, MDO, HDO)
Plastics	Fiberglass Reinforced, ABS, PVC
Coatings	Epoxy, Urethane
Elastomerics	Urethane, Silicone
Steel	
Aluminum	
Wood	

**CCS 2 Application Guidelines:** Spray Crete-Lease 880-Xtra in an ultra thin film from 0.0005 to 0.001 inch thick.

Hold the spray tip 12 to 18 inches from the form. CCS 2 requires the use of non-porous forms and formliners. Only spray with flat spray tips...8001 or 800067. Adjust pressure to provide a flow rate through the spray tip of about 12 ounces per minute for the 8001 spray tip and 10 ounces per minute for the 800067 spray tip.

**CCS 3 Application Guidelines:** Spray apply Crete-Lease 880-Xtra in a thin film from 0.001 to 0.0025 inch thick.

Use non-porous form surfaces to produce CCS 3. Use flat spray tips 8001 or 800067.

**CCS 4 Application Guidelines:** Spray Crete-Lease in a film from 0.0025 to 0.0045 inch thick. Use any form or formliner, including any grade of plywood. Flat spray tip 8001 or 800067 are recommended.

**CCS 5 Application Guidelines:** Spray apply Crete-Lease Release Agent from 0.0045 to 0.0065 inch thick. Use any type of form.

**CCS 6 Application Guidelines:** Apply Crete-Lease Release Agent in the fastest, most convenient way.

**Notes:**

a. Producing CCS 1, CCS 2, or CCS 3 concrete surfaces requires the use of non-porous form facings (e.g., elastomeric, steel, plastic, high density

**SPRAY COVERAGE RATES TO OBTAIN HIGH VISUAL IMPACT CONCRETE**

Optimum Coverage Rate For  
**CCS 2                      CCS 3**

Flat Spray Tip	Pressure	CCS 2	CCS 3
<b>80015 tip</b>	30-40 psi	60 sq ft/10 sec	30 sq ft/10 sec
<b>8001 tip</b>	30-40 psi	40 sq ft/10 sec	20 sq ft/10 sec
<b>800067 fine tip</b>	50-60 psi	35 sq ft/10 sec	15 sq ft/10 sec
<b>800050 fine tip</b>	50-60 psi	25 sq ft/10 sec	12 sq ft/10 sec
<b>Typical Wet Film Thickness</b>	0.0005 to 0.001 inch	0.0001 to 0.0025 inch	

**Notes:** 1. The coverage rates are for smooth non-porous forms.  
2. Distance between form and spray tip is constant; typically between 12 and 18 inches.

**COVERAGE WITH CRETE-LEASE 880-Xtra**

Form Surface	(sq ft/gal)
Hard & Smooth	2,000
Pre-oiled Plywood	1,200
Untreated Plywood	900

overlaid plywood, fiberglass, ABS, PVC and urethane or epoxy coatings on wood).

b. An ultra thin film (0.0005 inch) of Crete-Lease 880-Xtra releases easier than thicker films.

c. In producing CCS 1 concrete, the surface of the form or formliner must be free from defects. Joints must be water tight.

d. Protect form and formliner surfaces treated with release agent, from precipitation, dust and debris when producing CCS 1, CCS 2 and CCS 3.

**6. AVAILABILITY AND COST**

Availability: Crete-Lease 880-Xtra is available in 1 and 5 gallon containers; orange and white striped 55 gallon drums and 275 gallon MegaPaks. Contact Cresset Chemical Company for nearest distributor.

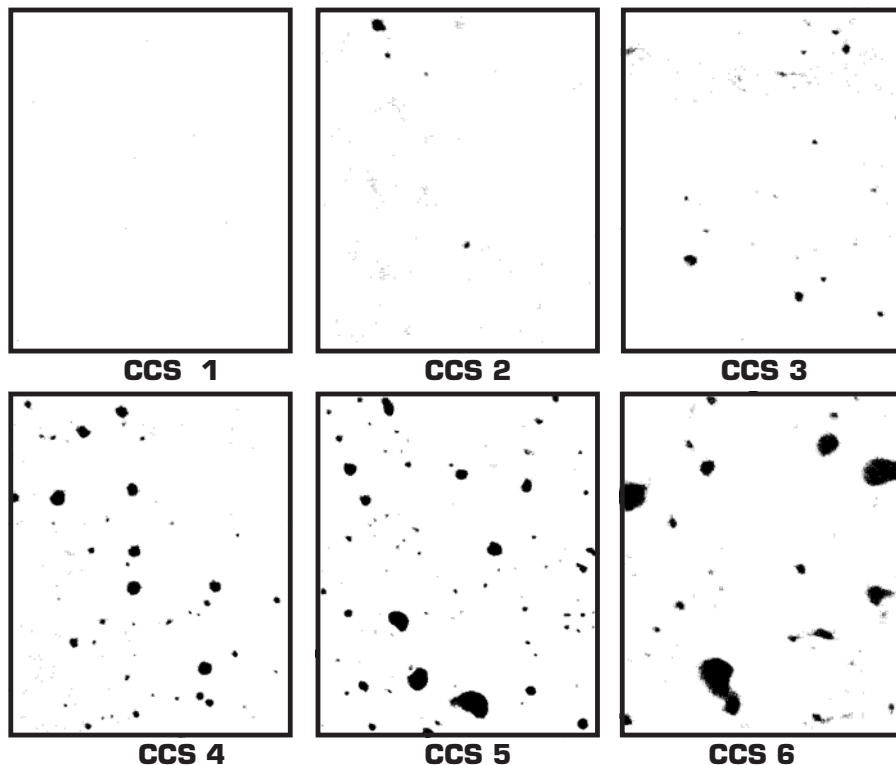
**Cost:** The cost on hard, smooth surfaces is about \$0.008 per square foot (January 2007).

**7. LIMITED WARRANTY**

Cresset Chemical Company warrants the product against defects in materials for a period of 1 year from purchase. If Cresset receives notice of such defects during the warranty period, Cresset at its option will either replace the product or refund the purchase price. THE WARRANTY SET FORTH ABOVE IS EXCLUSIVE AND NO OTHER WARRANTY, WHETHER WRITTEN OR ORAL, IS EXPRESSED OR IMPLIED. CRESSET SPECIFICALLY DISCLAIMS THE WARRANTIES OF MERCHANTABILITY AND FITNESS FOR A PARTICULAR PURPOSE. THE REMEDIES PROVIDED HEREIN ARE BUYER'S SOLE AND EXCLUSIVE REMEDIES. IN NO EVENT SHALL CRESSET CHEMICAL COMPANY BE LIABLE FOR DIRECT, INDIRECT, SPECIAL, INCIDENTAL OR CONSEQUENTIAL DAMAGES (INCLUDING LOSS OF PROFIT) WHETHER BASED ON CONTRACT, TORT OR ANY OTHER LEGAL THEORY.

**8. MAINTENANCE**

Cover, or store drums on side to prevent water (i.e. moisture, condensation, rain) from entering the drum.



These simulated Figures are parts of larger photographs which appear in "Cresset Concrete Standards". Write or call for your free brochure. Scale 1:1.